

STUDENT



GUIDE



— SCIENCES
— PO — LYON

EDITO

WELCOME
AMONG US!

Since your arrival at Sciences Po Lyon, you probably have many questions about what to expect here. The point of this guide is to give you some answers about the practical aspects of your life within the Sciences Po's campus.



Sciences Po Lyon is a university created in 1948 on the model of the former “Ecole libre des sciences politiques” commonly known as Sciences Po. Since 2017, the university owns 2 campus, the historical campus of Lyon in the 7th district of the city and a second campus in Saint Etienne’s downtown. Member of the Réseau ScPo with 6 other Sciences Po all around France (Aix, Lille, Rennes, Saint Germain en Laye, Strasbourg and Toulouse). Sciences Po Lyon welcomes each year through its competitive examinations 240 students in the 1st year, 50 students in the 2nd year, 40 students in 4th year and an dozen of professionals in continuing education.

This guide is produced jointly by the student members of “À L’Unisson” and the communication department of Sciences Po Lyon. Designed by students for students, this guide will help you better understand your new life at the university! This guide is not intended to be exhaustive so if you want to know more about a specific topic (especially in the current health situation), do not hesitate to consult the intranet to find the latest updated information, the corresponding sections will be indicated on the pages.



STUDYING AT SCIENCES PO LYON

p. 4



THE ORGANIZATION OF STUDIES

p. 6

UNDERGRADUATE DEGREE

POSTGRADUATE DEGREE



GETTING INVOLVED IN THE STUDENT LIFE

p. 8



SERVICES DEDICATED TO STUDENTS

p. 10

THE COMPUTER TOOLS

PSYCHOLOGICAL SUPPORT, PREVENTIVE MEDICINE AND SOCIAL ASSISTANCE

ACCOMODATION SERVICES

UNIVERSITY LIBRARIES



LIFE ON CAMPUS

p. 16

STUDENT LIFE

LIST OF ASSOCIATIONS



PRACTICAL INFORMATION AND USEFUL CONTACTS

p. 26

WHAT TO DO IF I MISS A COURSE ?

MAKE A REQUEST FOR AN EXAM ACCOMODATION

GETTING AROUND BETWEEN CAMPUSES

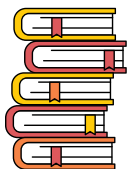
ESSENTIAL CONTACTS IN SCIENCES PO LYON





STUDYING AT SCIENCES POLYON

The complete cursus at Sciences Po Lyon is 5 years of studies divided in 2 cycles: undergraduate studies which lasts 3 years including 1 year abroad and the postgraduate studies which last 2 years to end in the professional field.



During the undergraduate studies, the students have the possibility to take optional classes, in addition to the mandatory courses, to develop complementary knowledge: establishment degrees (ED, DE in French) and also dual courses.

During the postgraduate studies, the students integrate a department and a specialty and are also able to take one of the four double degrees offered by Sciences Po Lyon.

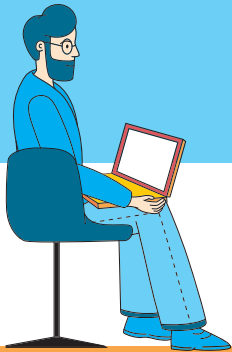
UNDERGRADUATE STUDIES (1ST, 2ND, 3RD YEAR)

A BIT OF VOCABULARY

Different types of courses make up the timetable:

The CFs

Cours fondamentaux (lectures) generally in a lecture hall. The CFs include the main subjects taught in a Sciences Po: Law class, Economy, Political Sciences and History.



The CDMs

Conferences de méthode (tutorial sessions) in small groups, allowing to focus on some aspects of the course, working with other formats: debates, written exercises, oral presentations, files to hand in... It's also the preferred format for the languages courses.

The COs

Cours d'ouverture (opening classes). Each semester, the students have to choose one or two courses graded in a list which changes every new year.



THE ORGANIZATION OF STUDIES



UNDERGRADUATE STUDIES

Multidisciplinary and generalist training

1ST YEAR

2ND YEAR

3RD YEAR

60 ECTS

120 ECTS

180 ECTS

1ST AND 2ND YEAR

The two first years of the degree are multidisciplinary and are based on four main subjects: Law class, Economy, Political Sciences and History. The students must take two languages courses. They also benefit of a course dedicated to the creation of their professional project. The courses are split in two semesters and are divided in lectures (CO+CF) and tutorials (CDM) of about 20 students each. At the same time, they can take establishment degrees and dual courses.

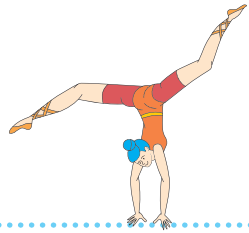
3RD YEAR

The 3rd year ends the undergraduate studies of the Sciences Po Lyon degree. It is one mandatory year abroad. The access to the postgraduate studies supposes, in addition to the validation of the 3rd year, that the student did a professional experience (internship, charity work...) during the undergraduate studies period. This experience can be during the 1st, 2nd or 3rd year.

//

ESTABLISHMENT DEGREES
DUAL COURSES

DEGREE IN 5 YEARS



4th YEAR

240 ECTS

4TH YEAR

During the 4th year, the students integrate a field of specialization within the five fields offered by Sciences Po Lyon:

Public Affairs / International Affairs /
Communication / Territories / International
Public Affairs.

In addition to choose the field, the students still have common mandatory courses together.

POSTGRADUATE STUDIES
Specialization and professionalization



5th YEAR

300 ECTS

5TH YEAR

During the 5th year, the students continue to specialize by integrating a specialty inside the field they previously chose. The goal is to best prepare their professional integration. A longer internship concludes their studies.

During the postgraduate studies, the students have the possibility to take a dual degree in exchange with foreign universities: Hong Kong Baptist University in China and Loughborough University in England.



DUAL DEGREE

Hong Kong Baptist University
Loughborough University



GET INVOLVED IN THE STUDENT LIFE

At Sciences Po Lyon, an important weight is given to students' voice. The representatives are from lists which gather appointed students, spokespersons, demands and requests from their classmates. Some elected students sit in several commissions, and especially in the Conseil d'Administration (board of directors, 9 sits) which determine the overall policy of the school.

To this day, two students lists exist : A L'Unisson and Solidaires, which each has un programme and claims. The 9 sits will fall into the two lists according to their number of voices won for each of them during the representatives' elections (November). Every student from all the school years can vote.

The role of elected students may be hard to understand. If you have any questions, any requests, feel free to contact them!

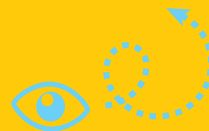




MARTINO

» Hi! My name is Martino, I'm a bachelor student in Diplomatic and International Sciences from the University of Bologna, campus of Forlì. Student life at Sciences Po Lyon has been amazing so far. Lyon is a lovely city, of just the right size. You'll find plenty of clubs and cool pubs, especially in Croix Rousse. As a student in Lyon you'll also benefit from the position of the city, just two hours away from Paris on TGV. Lyon is also a lively cultural center: the many cinemas, the opera house, the museum of fine arts, the museum of cinema, the auditorium and the Part Dieu Library are the main cultural attractions that I've enjoyed so far. You'll also have plenty of occasions to socialize and meet fellow international or French students, be it at Erasmus parties or through the many student associations at Sciences Po Lyon. To sum up I definitely recommend to consider Lyon as the destination of your exchange year. »

From Bologna, Italia





SERVICES DEDICATED TO STUDENTS

Many tools and services are available to you as a Sciences Po Lyon student. From the mailbox, by the way through medical care until the search for accommodation, we give you a point on everything what you need to know!

COMPUTER TOOLS



STUDENT INTRANET

THE resource that will answer all your questions! Each student has an identifier allowing access to the school's intranet. You will find most of the essential information there: the online course platform, information on internships, mobility ... Most of the information mentioned in this guide is developed on the intranet.



ONLINE COURSE PLATFORM (MOODLE)

The platform, accessible from the intranet home page, provides access to all the documents posted by teachers (lesson plan, bibliographies and supporting documents, etc.). Note that some courses require an access key transmitted by the teachers.





DIGITAL PORTAL

Accessible via a link sent by email at the beginning of the year, it allows you to consult your transcripts by semester or DE. It also lists absences and various administrative information such as INE, student number, school certificate etc.



UNIPAD

An online collaborative note-taking platform, Unipad is primarily for use by international students. Several French students take their notes online via this tool to allow internationals to better follow and facilitate their understanding. At the end of each week, all of the notes taken are erased.



MAIL BOX AND SOFTWARE

At the start of the year, each student has an @sciencespo-lyon.fr email address and a Microsoft license (Outlook, Word, Excel, PowerPoint, Teams, etc.). All communication with the administration will take place on this mailbox.



THE TIMETABLE

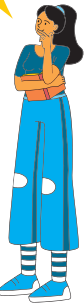
All students can consult their timetable from their smartphone or computer via an online tool: **“My planning”**.



[Intranet > Services > Informatique](#)

Did you know?

Wifi is accessible on every campus, Self-service computers and printers are available on all campuses in Building L and the school library.



PSYCHOLOGICAL SUPPORT, PREVENTIVE MEDICINE AND SOCIAL ASSISTANCE



APSYTUDE

Psychologists specializing in student issues. The association offers interviews free, individual and confidential with psychologists to take stock of various subjects (discomfort, sleep, addictions, difficulties integrating abroad, ...).

Make an appointment:

www.apsytude.com/fr/rdv-hl

• **Lyon campus**

Happsy hours : consultations take place in meeting room 1.17 on the 1st floor of building D, on Thursdays from 10 a.m. to 2 p.m. and every other Tuesday from 11 a.m. to 2 p.m.

• **Saint Etienne campus and 3A:**

Happsy Line.

Online sessions by appointment



UNIVERSITY MEDICINE

• **Lyon campus**

SSU (University Health Service). The SSU offers to students of the University of care consultations (general medicine, nursing care, gynecology) and prevention (preventive medicine, nursing, psychology, dietetics), in complementarity with town doctors and hospitals.

Porte des Alpes Campus - Bât. L. Reception from Monday to Friday from 8:30 am to 5:30 pm. 04 78 77 43 10 / ssu@univ-lyon2.fr

• **Saint-Etienne campus**

MPU (University Preventive Medicine). A medical, paramedical and social team whose function is to advise, orient and monitor students who feel the need and to issue medical certificates.

Jean Monnet University.

10, Rue Tréfilerie. Student reception Every day from 8 a.m. to 12 p.m. and from 1 p.m. to 4 p.m. 04 69 66 11 00



WELFARE

Sciences Po Lyon has a social fund which you can benefit from if necessary.

To send a request, contact the CROUS social services :

• **Lyon campus**

04 72 80 13 25

(Tuesday: 1:30 p.m. - 4:30 p.m.; Thursday: 9 a.m. - 12 p.m.) By email: ssocial@crous-lyon.fr

by specifying your area of study and the reason for the request.

• **Saint-Etienne campus**

Rose RIZZELI-TRISORIO - 04 77 81 79 91
Tuesday and Friday from 1:30 p.m. to 4:00 p.m.)By email : ssocial@crous-lyon.fr.

ACCOMMODATION SERVICES



CROUS STUDENT RESIDENCES

31 university residences are located in the Lyon Academy, offering more than 8,500 accommodation places. These student residences in Lyon and Saint-Étienne welcome students based on social criteria, individual foreigners, French government scholarship holders, teacher-researchers, etc.

For more information: [crous-lyon.fr / accommodations / our-accommodations /](https://crous-lyon.fr/accmod)

The Crous also offers accommodation adapted to students with disabilities in its university residences. To apply for housing, you must complete a student social file (DSE).

For any information request, you can contact:

handicap@crous-lyon.fr



HOUSING SCIENCES PO LYON

Sciences Po Lyon offers an online rental platform, in partnership with Studapart. Housing Sciences Po Lyon directly connects students and future students of the establishment with private owners. All procedures are carried out online with permanent technical support from Studapart. The latter can also act as guarantor for the tenant and thus facilitate access to accommodation in Lyon and Saint-Etienne.



CITIZENROOMS

Some devices allow to find inexpensive accommodation in exchange for regular involvement in a neighborhood project or with an elderly person such as SoColoc, A2Ages or Kaps, Afev's solidarity shared apartments.



[Intranet >> Campus life >> Day to day >> Housing / Classifieds](#)

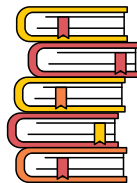
UNIVERSITY LIBRARIES

Students from both campuses have access to the library, located on the Lyon campus, and to its online resources, available 24 hours a day.

The Lyon campus' library (building B) is open Monday to Thursday from 8:30 a.m. to 7 p.m., and Friday from 8:30 a.m. to 5:30 p.m.

Saint-Etienne students can go to the Tréfilerie library located a few minutes walk from the campus. It is open Monday to Friday from 8 a.m. to 8 p.m. and Saturday from 9 a.m. to 6.30 p.m.

Note that all students registered at Sciences Po Lyon have free access and upon registration with the IZLY card to the BUs of member establishments of the UDL (University of Lyon).



TIP

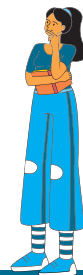
The «Explore» section provides a set of files, resources and bibliographies on various subjects. This can help you learn more about a course (especially DE courses) and understand current affairs.

BOOKS, MAGAZINES

You can borrow books, DVDs, magazines, comics, novels ... up to 20 documents for 3 weeks. If necessary, it is possible to renew a loan, at reception or directly on the BU website (renew / borrow).

ONLINE RESOURCES

Discover all of the online resources available on the library site. Direct access from the Lyon campus, via the "Online resources" section. Remotely, identification required with your Sciences Po Lyon credentials.



TRAINING

The library provides 2 compulsory training courses: the CDM “Information skills” in the 1st year and the “Memoirs” training for 4 year students concerned.

Other non-mandatory training and workshops are offered throughout the year to support you in your documentary research.

OTHER SERVICES

Suggest a purchase / Borrow a dictaphone / Request an interlibrary loan (ILL) / Make an appointment for personalized support for your research / group work room.

The library also offers a year-round program (exhibitions, meetings, etc.) Subscribe to the library’s Facebook page to follow the news!

The library is on **Affluences**, an app that allows you to reserve workspaces and monitor library attendance in real time. Download the app from Android or the App Store.

Book your desk at the bib!





LIFE ON CAMPUS



THE STUDENT LIFE

At Sciences Po Lyon, there are 40 associations present on two campuses. They organize many events and enable their members to share common interests, to bring together students around projects and to master in the student life requirements.

To get involved takes time and energy, but it is very enriching on both professional and relational side.



If you want to create your own association, check the intranet to know more about it.



You wanna join an association ? Feel free to contact them to offer your talents !

CATIE MALONE

« My name is Catie Malone, and I'm a student from the US studying at Sciences Po Lyon for a semester. I am taking my classes here in French, focusing on topics such as culture, politics, and African history. At Sciences Po, I have found a welcoming community of international as well as French students who are excited to help us integrate. I feel so lucky to be able to study here, form a community, and explore Lyon »

From Georgetown, USA

Feel free to ask the communication department at Sciences Po Lyon, they have a student life coordinator: vie.etudiante@sciencespo-lyon.fr

LIST OF ASSOCIATIONS



BDE (STUDENT OFFICE)

The association of all students!

Evenings, events, (dis) integration, gala, they organize and host the events of the year for all students.

- 🌐 [bde.sciencespolyon](https://www.bde.sciencespolyon.fr) | [f BDE.sciencespolyon](https://www.facebook.com/BDE.sciencespolyon)
- ✉ bde@sciencespo-lyon.fr
- 📍 LYON & ST ETIENNE



STUDENT LISTS

À L'UNISSON

Student representation association

- 🌐 [alunisson_spl](https://www.alunisson-spl.fr) | [f Alunissonspl](https://www.facebook.com/Alunissonspl)
- ✉ alunisson@sciencespo-lyon.fr
- 📍 LYON & ST ETIENNE



SOLIDAIRES ÉTUDIANT-E-S LYON

Student representation association

- 🌐 [soletulyon](https://www.soletulyon.fr) | [f SolidairesEtu.IEP.Lyon](https://www.facebook.com/SolidairesEtu.IEP.Lyon)
- ✉ solidairesetudiantes.ieplyon@sciencespo-lyon.fr
- 📍 LYON & ST ETIENNE

ARTS AND CULTURE



BDA (ARTS OFFICE)

Promotion of access to cultural establishments in the city and organization of cultural and artistic events.

- 📍 bdaspolyon | **f** BureauDesArtsSPL
- ✉️ bda@sciencespo-lyon.fr
- 📍 LYON & ST ETIENNE



BOBINOPHILE

Association of cinema lovers: realization of short films, screenings and film reviews.

- 📍 bobinophile | **f** Bobinophile
- ✉️ bobinophile@sciencespo-lyon.fr
- 📍 LYON & ST ETIENNE



CLOSET

Promotion of a more responsible fashion.

- 📍 closet_spl | **f** Closet
- ✉️ closet@sciencespo-lyon.fr
- 📍 LYON



DÉCLICS

Association of photography amateurs: organization of competitions and exchanges of good practices.

- 📍 declicsspl | **f** declics.sciencespolyon
- ✉️ : declics@sciencespo-lyon.fr
- 📍 LYON



LA DOMINICALE

Organization of cultural events on Sundays and promotion of Lyon's cultural and artistic activity, de l'activité culturelle et artistique lyonnaise.

- 📍 ladominicale | **f** ladominicale
- ✉️ : ladominicale@sciencespo-lyon.fr | 📍 LYON



SPAM - TOUS EN SCENE

(SCIENCES PO AMAZING MUSICAL)

Musical association, creating a show every year.

- 📍 spl_amazingmusical | **f** @SPAMLyon
- ✉️ : tousenscene@sciencespo-lyon.fr | 📍 LYON



SPOTS (SCIENCES PO ON THE STAGE)

Theater association.

- 📍 sciences_po_on_the_stage | **f** sciencespo.onthestage
- ✉️ : spots@sciencespo-lyon.fr | 📍 LYON



TEMPO

Association dedicated to music (song and instruments).

- 📍 instempogram | **f** temposciencespolyon
- ✉️ : tempo@sciencespo-lyon.fr | 📍 LYON & ST ETIENNE

CONFERENCES, DEBATES & SIMULATIONS



BSD (BUREAU DE STRATÉGIE ET DE DÉFENSE)

Sensitization on the challenges of international security, defense and geopolitics, organization of conferences.

🌐 bsd.sciencespolymun.fr | **f** Bureau Stratégie Défense
✉️ : bureaudedefense@sciencespo-lyon.fr
📍 LYON



HÉMICYCLE

Simulation of parliamentary work.

f [hemicycleSPL](https://hemicycle.spl.fr)
✉️ : hemicycle@sciencespo-lyon.fr
📍 LYON



LE VENT DU CHANGEMENT

Organization of conferences and debates on social issues.

🌐 lvdc.mouvement.fr | **f** lvdc.spl.fr
✉️ : leventduchangement@sciencespo-lyon.fr
📍 LYON



MUN (MODEL UNITED NATIONS)

Simulations of debates at the United Nations in English and participation in international conferences.

🌐 [mun.spl](https://mun.spl.fr) | **f** [mun.spl](https://mun.spl.fr)
✉️ : mun@sciencespo-lyon.fr
📍 LYON & ST ETIENNE



PLACE AU DÉBAT !

Organization of debates and conferences.

🌐 [place_au_debat](https://place_au_debat.fr) | **f** [Placeaubatspl](https://placeaubatspl.fr)
✉️ : contact@placeaubatspl.fr
📍 LYON



SCIENCES PORATEUR

Association dedicated to eloquence: learning to speak, convince and express in front of an audience. Participation in competitions.

🌐 [sciencesporateur](https://sciencesporateur.fr) | **f** [scporateur](https://sciencesporateur.fr)
✉️ : sciencesporateur@sciencespo-lyon.fr
📍 LYON & ST ETIENNE



WORLD CULTURE



BDI (INTERNATIONAL'S OFFICE)

Reception and integration of international students. Organization of events, sponsorship, cultural visits, tutoring.

📍 bdinternationaux | 📌 bdisciencespo
✉️ : bd.internationaux@sciencespo-lyon.fr
📍 LYON



AHLAN

Promotion and organization of events around the cultures of the Arab-Muslim world.

📍 ahlanlyon | 📌 ahlan sciencespolyon
✉️ : ahlan@sciencespo-lyon.fr
📍 LYON



ARRIBA DO SUL

Promotion and organization of events around Latin American cultures.

📍 arribadosul_spl | 📌 ArribadoSulSPL
✉️ : arribadosul@sciencespo-lyon.fr
📍 LYON



ASIAN CORNER

Promotion and organization of events around Asian cultures.

📍 asiancorner.spl | 📌 asiancornerieplyon
✉️ : asian.corner@sciencespo-lyon.fr
📍 LYON



ASSOCIATION POUR L'AFRIQUE

Promotion and organization of events around African cultures.

📍 apa.spl | 📌 apa.spl
✉️ : associationpourlafrique@sciencespo-lyon.fr
📍 LYON



HALLO LEUTE

Association of German-speaking students.

📌 Hallo Leute SPL
✉️ : hallo.leute@sciencespo-lyon.fr
📍 LYON



SCIENCES POLCHOÏ

Promotion and organization of events around Russian culture.

📍 sciencespolchoi | 📌 Sciencespolchoi
✉️ : sciencespolchoi@sciencespo-lyon.fr
📍 ST-ETIENNE

ENTREPRENEURSHIP



ENACTUS

Supporting students in engaging and carrying out social entrepreneurship projects.

📍 enactusciencepolyon | **f** Enactusciencepolyon
✉ : enactus@sciencespo-lyon.fr
📍 LYON



JCS (JUNIOR ADVICE AND STRATEGY)

The goal of the Sciences Po Lyon Junior Company is to professionalize the university course by offering students paid assignments with both public and private actors.

📍 jcssciencepolyon | **f** jcssciencepolyon
✉ : contact@jcslyon.com
📍 LYON & ST ETIENNE



GASTRONOMY



SCIENCES POPOTES

Association of food and gastronomy lovers.

📍 sciences_popotes | **f** Sciences Popotes
✉ : sciences.popotes@sciencespo-lyon.fr
📍 LYON & ST ETIENNE



SCIENCES POTS DE VIN

Wine association.

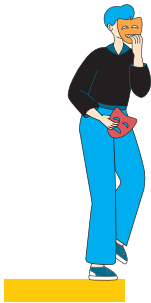
📍 sciencespotsdevin | **f** sciencespotsdevin
✉ : sciencespotsdevins@sciencespo-lyon.fr
📍 LYON



SCIENCES PRESSION

Association of Zythology, the study of beer.

f SciencesPression
✉ : sciencespression@sciencespo-lyon.fr
📍 ST ETIENNE



SOCIETY



AMNESTY INTERNATIONAL

Human Rights Association.

- 📍 amnestyscpolyon | [f](#) AmnestyScPoLyon
- ✉ aj.amnestyscpolyon@gmail.com
- 📍 LYON

ASSOLIDAIRE

Solidarity association which federates the commitment of students in solidarity actions at the local level (marauding, blood donation ...).

- 📍 assolidaire_scpolyon | [f](#) assolidaireSpoLyon
- ✉ assolidaire@sciencespo-lyon.fr
- 📍 LYON

ASSOLI:
DAIRE:



BDM (MEDIA'S OFFICE)

Free expression and dissemination of information via several types of media: radio, video and written.

- 📍 bureaudesmediasspl | [f](#) BureauDesMediasSPL
- ✉ bdm@sciencespo-lyon.fr
- 📍 LYON



COLLECTIF PAMPLEMOUSSE

Association for the defense of feminist themes among students and awareness of gender and gender equality issues.

- 📍 pamplemoussecollectif | [f](#) collectifpamplemoussespl
- ✉ : collectifpamplemousse@sciencespo-lyon.fr
- 📍 LYON & ST ETIENNE

The association also has two branches: Hippoqueer, dedicated to queer themes and People Of Color Sciences, dedicated to anti-racist themes.

Hippoqueer

- 📍 hippoqueer | [f](#) hippoqueerSPL

Sciences People of Colour

- 📍 sciencespoc | [f](#) SciencePOC



EH MADEMOISELLE

Awareness of primary school students and secondary students to the issues of gender-based and sexual violence.

- 📍 _ehmademoiselle | [f](#) EhMademoizel
- ✉ eh-mademoiselle@sciencespo-lyon.fr
- 📍 LYON

Nouvelle
asso !

SCIENCES PO'UR TOUS

Raising awareness around topics related to disability and illness through the organization of events and projects.

✉ sciencespourtous@sciencespo-lyon.fr

📍 ST ETIENNE

VOLONTERRE

Awareness of the challenges of sustainable development and promotion of ecology.

🌐 volonterre | 📌 Volonterre SPL

✉ volonterre@sciencespo-lyon.fr

📍 LYON & ST ETIENNE

TERRE D'HOMMES

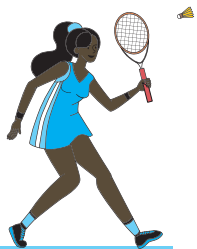
Exchange and help in learning French for refugees from the Lyon and Saint-Etienne metropolitan areas.

🌐 assoterredhommes | 📌 TerredHommesIEPLyon

✉ terredhommes@sciencespo-lyon.fr

📍 LYON & ST ETIENNE





SPORTS



BDS (SPORTS OFFICE)

Promotion of sport, leisure activities or in competition. Manage many teams in various sports.

📍 bdsscpolyon | [f](#) BDS.sciencespolyon

✉ : bds@sciencespo-lyon.fr

📍 LYON & ST ETIENNE



DRAGONES FC

Men's and Women's Football Association.

📍 dragones_fc_spl | [f](#) Dragones FC

✉ : dragonesfc@sciencespo-lyon.fr

📍 LYON



SPL HANDBALL

Men's and Women's Handball Association.

📍 scpolyonhandball | [f](#) sphverslinfinietaudela

✉ : splh@sciencespo-lyon.fr

📍 LYON



GP RUGBY CLUB

Men's and Women's Rugby Association.

📍 g.p.rugby.club | [f](#) gprugbyclub

✉ : gprc@sciencespo-lyon.fr

📍 LYON & ST ETIENNE



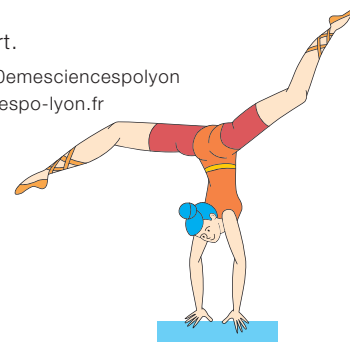
LA 90^E

Promotion of e-sport.

📍 la90emespl | [f](#) la90emesciencespolyon

✉ : la90eme@sciencespo-lyon.fr

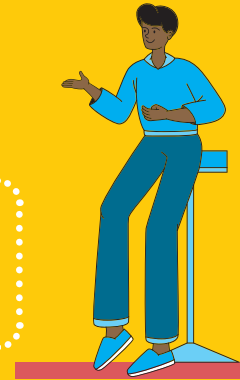
📍 LYON





There are also several specialty associations open to students of said specialties. Find the list and their contacts on the website!

[www.sciencespo-lyon.fr/fr/
services-et-vie-etudiante/
associations-etudiantes](http://www.sciencespo-lyon.fr/fr/services-et-vie-etudiante/associations-etudiantes)



MARTINO

« Hi! My name is Martino, I'm a bachelor student in Diplomatic and International Sciences from the University of Bologna, campus of Forlì. Student life at Sciences Po Lyon has been amazing so far. Lyon is a lovely city, of just the right size. You'll find plenty of clubs and cool pubs, especially in Croix Rousse. As a student in Lyon you'll also benefit from the position of the city, just two hours away from Paris on TGV. Lyon is also a lively cultural center: the many cinemas, the opera house, the museum of fine arts, the museum of cinema, the auditorium and the Part Dieu Library are the main cultural attractions that I've enjoyed so far. You'll also have plenty of occasions to socialize and meet fellow international or French students, be it at Erasmus parties or through the many student associations at Sciences Po Lyon. To sum up I definitely recommend to consider Lyon as the destination of your exchange year. »

From Bologna, Italia



PRACTICAL INFORMATION AND USEFUL CONTACTS

In this section,
find essential administrative
information to get the
year off to a good start!



WHAT TO DO IN CASE OF ABSENCE?

Attendance is mandatory in CDMs and in sport. Any unjustified absence is punishable by penalties and any absence must be reported, with supporting documentation, to your education manager, no later than 48 hours after the resumption of classes.

Are you away for more than a week?

You can request a telepresence robot to take compulsory courses remotely. To request it, complete the «Provision of a telepresence robot» form accessible from the intranet:

 [Intranet >> Services >> Santé](#)



GETTING AROUND BETWEEN CAMPUSES (LYON – SAINT-ETIENNE)

For educational trips (mandatory meetings, job fairs, etc.), Sciences Po Lyon provides buses or reimburses the round trip train fare. For conferences or associations, a return train ticket for each student from the Saint-Etienne campus is also paid for by the institution.

For members of associations (association meetings, regular trips for sports associations, etc.) or events (parties, conferences, etc.): requests for subsidies can be made to the CVA by the associations from the transportation budget. Associations can also anticipate these trips by including them in their annual grant applications to the Management Committee (grants at the beginning of the year) and in the Call for Projects (October and February). It should be noted that it is also possible to finance them through grant applications from outside Sciences Po Lyon or through partnerships. For elected student representatives, delegates and association representatives, travel expenses are systematically reimbursed within the framework of committees.

 [Intranet >> Au quotidien >> Transport entre les campus](#)

MAKE A REQUEST FOR AN EXAM ACCOMODATION

Specific arrangements can be made for salaried students, entrepreneurs, high-level athletes, artists or students with disabilities.

The possible arrangements range from a change of group to partial or total exemption from attendance. Applications must be made at the start of each semester to the studies department: direction-etudes@sciencespo-lyon.fr.

Students with disabilities are called upon to contact the disability advisor, Christophe Marques (christophe.marques@sciencespo-lyon.fr), as well as the health service of the University Lumière Lyon 2 at the start of the academic year, in order to be able to make up space for specific arrangements for the follow-up of courses and / or exams.

MY ESSENTIAL CONTACTS AT SCIENCES PO LYON

INTERNATIONAL MOBILITY :

• **Lyon & Saint-Etienne campus** : Florène COTTE |
Chloé LABOREY mobilite.internationale@sciencespo-lyon.fr

COMMUNICATIONS:

• **Lyon & Saint-Etienne campus** :
vie.etudiante@sciencespo-lyon.fr

DIRECTORATE OF STUDIES:

• **Lyon & Saint-Etienne campus** :
direction-etudes@sciencespo-lyon.fr

STUDENT VICE-PRESIDENT:

• **Lyon & Saint-Etienne campus** :
vpe@sciencespo-lyon.fr

PREVENTING DISCRIMINATION AND HARASSMENT

• **Lyon & Saint-Etienne campus** : Charlotte QUELIN |
Muriel SALLE egalite@sciencespo-lyon.fr

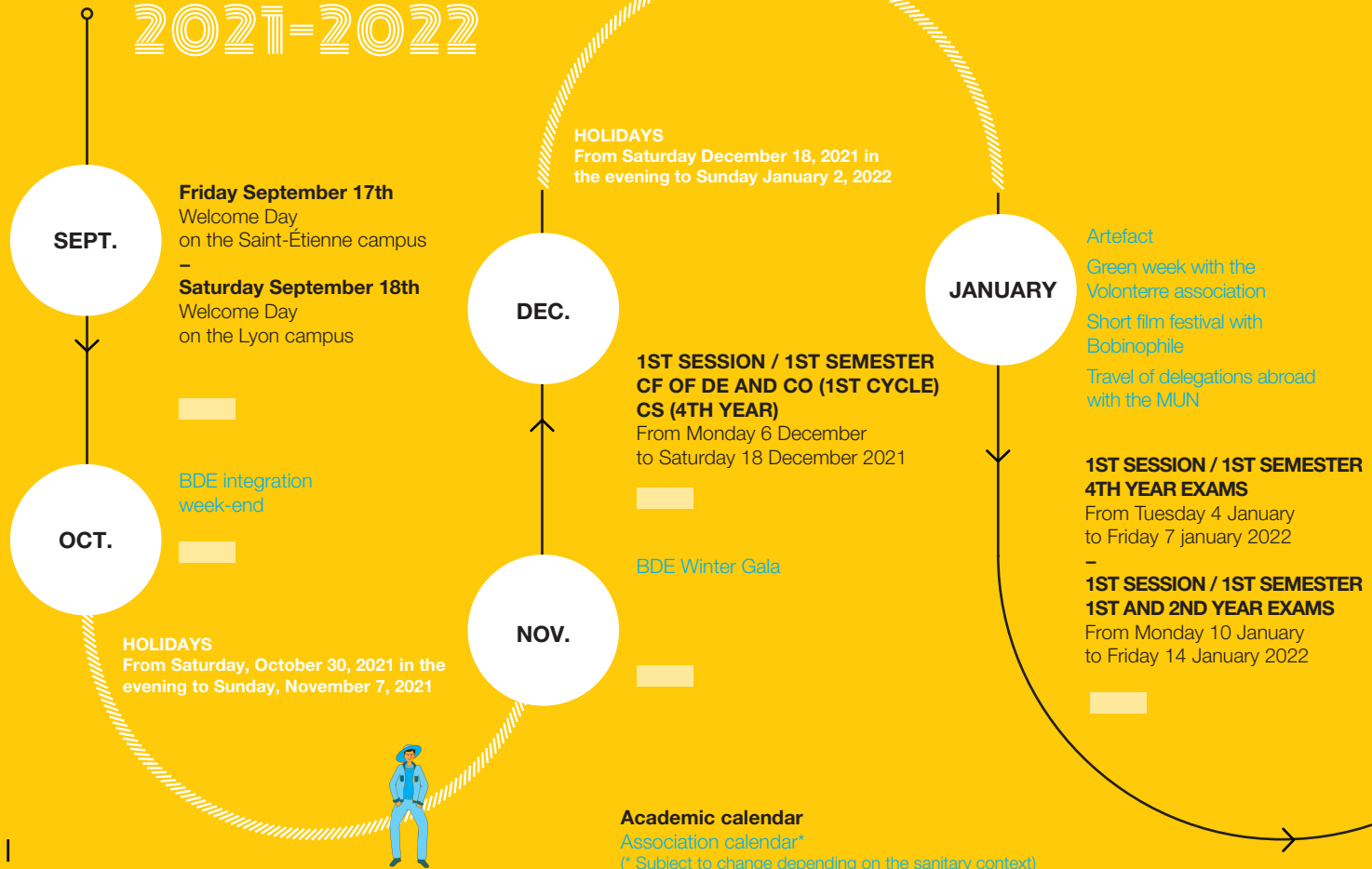
Referents dedicated to questions of secularism, entrepreneurship or even ethics can also be contacted by students.

 [Intranet >> Sciences Po Lyon >>](#)
[Organisation et fonctionnement >> Référents](#)



CALENDAR

2021-2022



HOLIDAYS

From Saturday 19 February 2022 evening to Sunday 27 February 2022



FEBRUARY

Jobs forum

Friday, January 21, 2022

BDE post-partial evening Skiing weekend with the BDS

Writing competition with the BDA

Mirabeau Prize

Lunar New Year with Asian Corner

Sports association's trips

MARCH

Public restitution of the Public Factory
in early April 2022

Jules Favre Prize with Sciences Porateur
MUN conferences
SPAM musical SPOTS play

APRIL

Week of Action Against Racism and Anti-Semitism (SACRA)
at the end of mars 2022

Festival with the Collectif Pamplemousse
Asian Cultures Week with Asian Corner
CRIT (sports competition) with BDS

1ST SESSION / 2ND SEMESTER CF OF DE AND CO (1ST CYCLE) CS (4TH YEAR)

From Monday April 11 to Friday 15

CATCHING

4th year exams

From Monday, September 12 to Friday September 16, 2022 included

1st and 2nd year exams

From Thursday June 30 to Wednesday 6 July 2022 included

ASCENSION BRIDGE

From Wednesday May 25, 2022 in the evening to Sunday May 29, 2022

GRAND ORAL

2nd semester

From Monday 23 May to Wednesday 25 May 2022

1ST SESSION / 2ND SEMESTER

1ST AND 2ND YEAR EXAMS

From Monday 16 May 2022 to Friday 20 May 2022

1ST SESSION / 2ND SEMESTER

4TH YEAR EXAMS

From Monday 9 May to Friday 13 May 2022

MAY

BDE end of year gala

HOLIDAYS

From Saturday February 19, 2022 in the evening to Sunday February 27, 2022

THE FINAL WORD

This student guide was created in 2019 by the Tandem association, which is now closed. Taken up in 2021 by the À L'Unisson association with the help of Sciences Po Lyon's communication department, this guide has been redesigned to best meet the needs of new students. It is intended to be updated every year by the students themselves in order to help new classes integrate better.

You want to join the adventure and participate in next year's guide?

Nothing could be simpler, contact the communication department of Sciences Po Lyon (communication@sciencespo-lyon.fr) to let you know and join the next working group!





Printed in Lyon
by **Imprimerie Ranchon**

This guide was created on the initiative of À L'Unisson, in partnership with the communications department of Sciences Po Lyon.

Writing

Max Neumann, À L'Unisson, Aurore Marquez-Santo (communications manager), Stéphanie Charbit (head of student life).

Graphics:

Adapted by Ulysse Richard from the graphic design of Atelier Chose

A project initiated by Tandem and Optimist :

Laura Martinet, Baptiste Beguinet and Chloé Varejao

— SCIENCES
— PO —
— LYON



À L'UNISSON
SCIENCES PO LYON